



General Certificate of Secondary Education
Higher Tier
June 2010

Geography (Specification A)

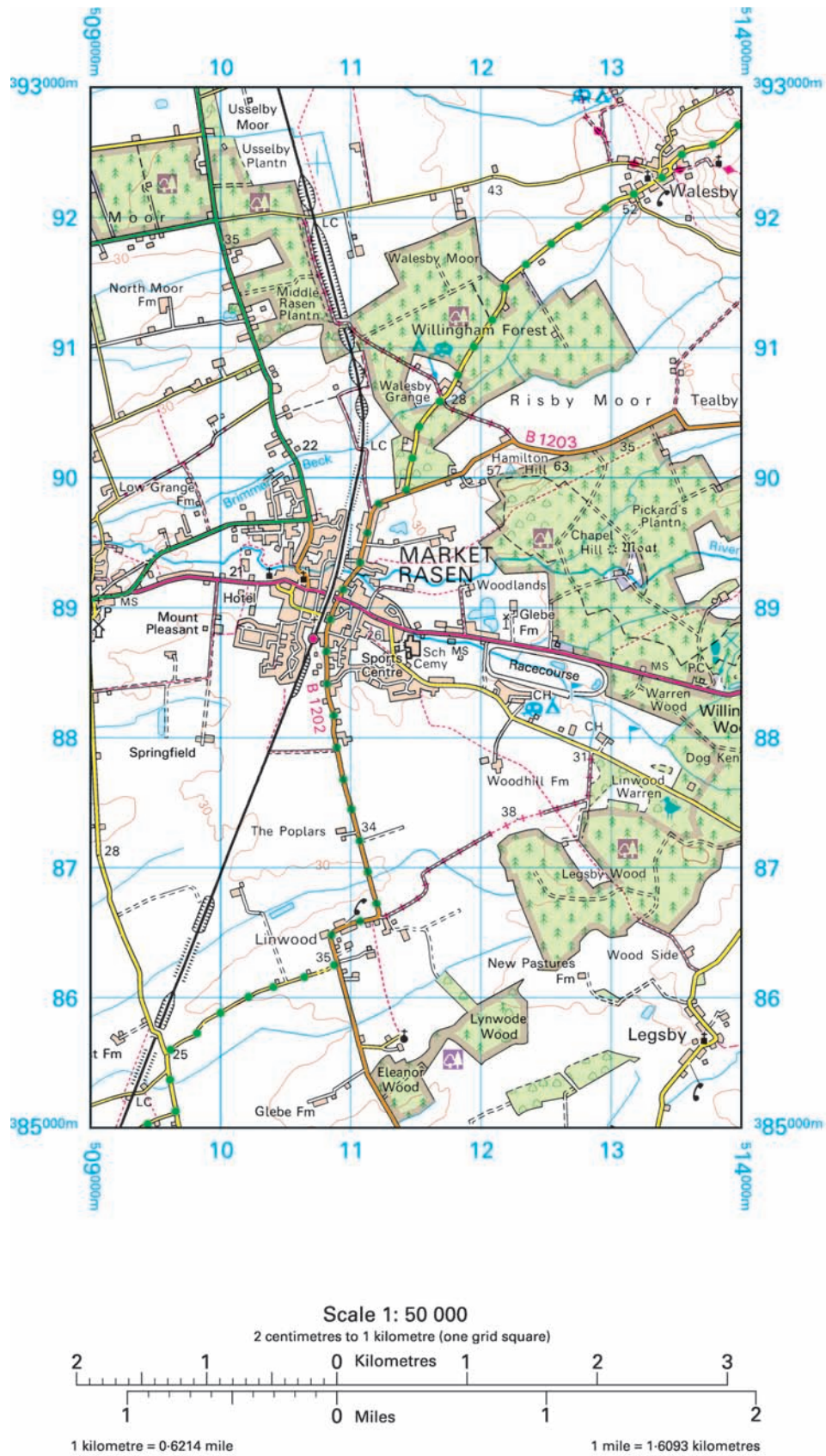
40301H

Unit 1 Physical Geography

Insert

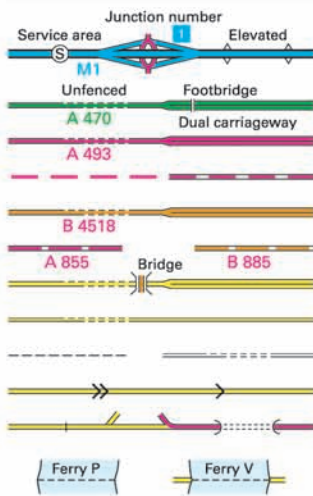
Page 3 is a perforated sheet showing the legend for the OS map extracts.
Detach page 3 and use when referring to the OS map extracts.

Figure 2



OS Map Extract Key

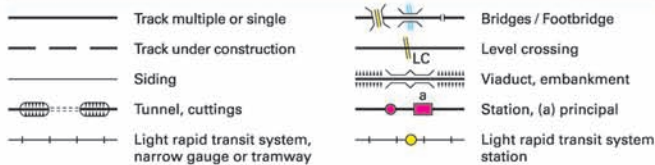
ROADS AND PATHS



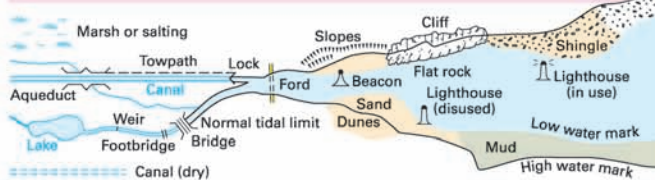
Not necessarily rights of way

- Motorway (dual carriageway)
- Primary Route (recommended through route)
- Main road
- Main road under construction
- Secondary road
- Narrow road with passing places
- Road generally more than 4m wide
- Road generally less than 4m wide
- Path / Other road, drive or track
- Gradient: steeper than 20% (1 in 5), 14% to 20% (1 in 7 to 1 in 5)
- Gates / Road tunnel
- Ferry (passenger) / Ferry (vehicle)

RAILWAYS



WATER FEATURES



HEIGHTS

- 1 metre = 3.2808 feet
- Contours are at 10 metres vertical interval
- Heights are to the nearest metre above mean sea level

Where two heights are shown the first height is to the base of the triangulation pillar and the second (in brackets) to the highest natural point of the hill

PUBLIC RIGHTS OF WAY

Not shown on maps of Scotland

- Footpath
- Bridleway
- Restricted byway
- Byway open to all traffic

The symbols show the defined route so far as the scale of mapping will allow.

The representation on this map of any other road, track or path is no evidence of the existence of a right of way

Danger Area Firing and Test Ranges in the area. Danger! Observe warning notices.

BOUNDARIES

- National
- District
- County, Unitary Authority, Metropolitan District or London Borough
- National Park

ROCK FEATURES



OTHER PUBLIC ACCESS

- Other route with public access (not normally shown in urban areas). Alignments are based on the best information available. These routes are not shown on maps of Scotland.
- On-road cycle route
- Traffic-free cycle route
- National Cycle Network number
- Regional Cycle Network number
- National Trail, European Long Distance Path, Long Distance Route, selected Recreational Routes

ANTIQUITIES

- Site of antiquity
- Battlefield (with date)
- Visible earthwork
- VILLA Roman
- Non-Roman

TOURIST INFORMATION

- Camp site / caravan site
- Garden
- Golf course or links
- Information centre (all year / seasonal)
- Nature reserve
- Parking, Park and ride (all year / seasonal)
- Picnic site
- Recreation / leisure / sports centre
- Selected places of tourist interest
- Telephone, public / roadside assistance
- Viewpoint
- Visitor centre
- Walks / Trails
- World Heritage site or area
- Youth hostel

LAND FEATURES

- Electricity transmission line (pylons shown at standard spacing)
- Pipe line (arrow indicates direction of flow)
- Buildings
- Important building (selected)
- Bus or coach station
- Current or former place of worship (with tower, with spire, minaret or dome)
- Place of worship
- Chimney or tower
- Glass structure
- Heliport
- Triangulation pillar
- Mast
- Wind pump / wind turbine
- Windmill with or without sails
- Graticule intersection at 5' intervals
- Cutting / embankment
- Landfill site or slag/spoil heap
- Coniferous wood
- Non-coniferous wood
- Mixed wood
- Orchard
- Park or ornamental ground
- Forestry Commission access land
- National Trust (always open / limited access, observe local signs)
- National Trust for Scotland (always open / limited access, observe local signs)

ABBREVIATIONS

- CG Cattle grid
- CH Clubhouse
- MP Milepost
- MS Milestone
- P Post office
- PC Public convenience (in rural areas)
- PH Public house
- TH Town Hall, Guildhall or equivalent

This page is intentionally blank

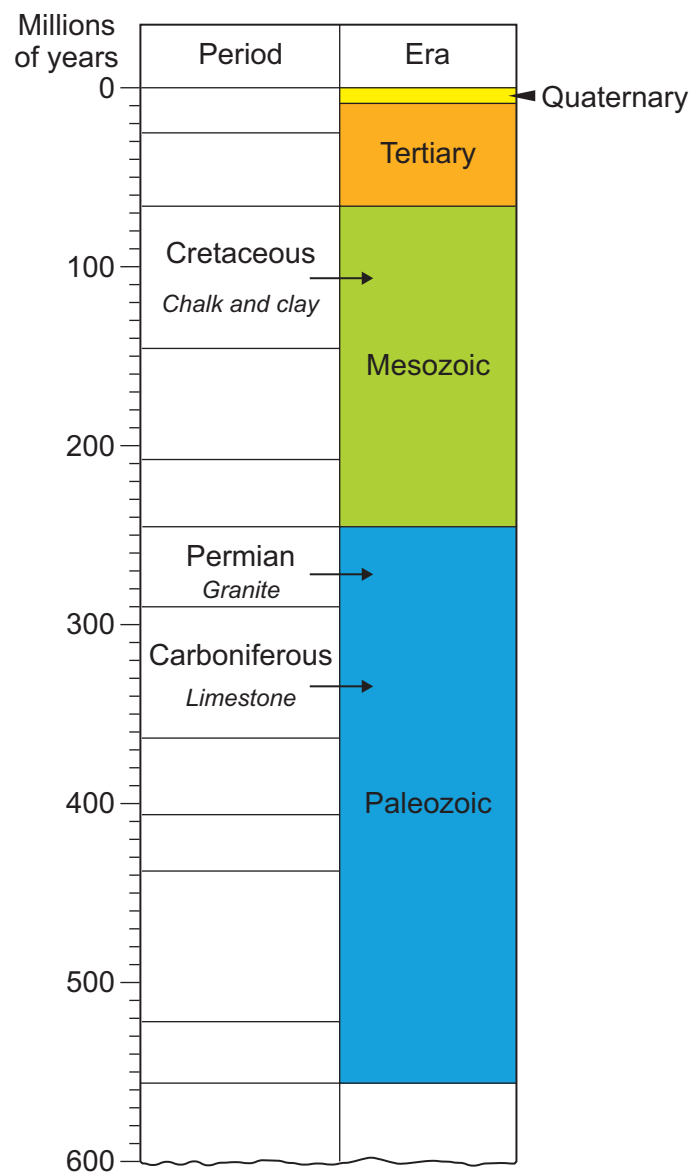
Figure 4

Figure 5



Figure 6

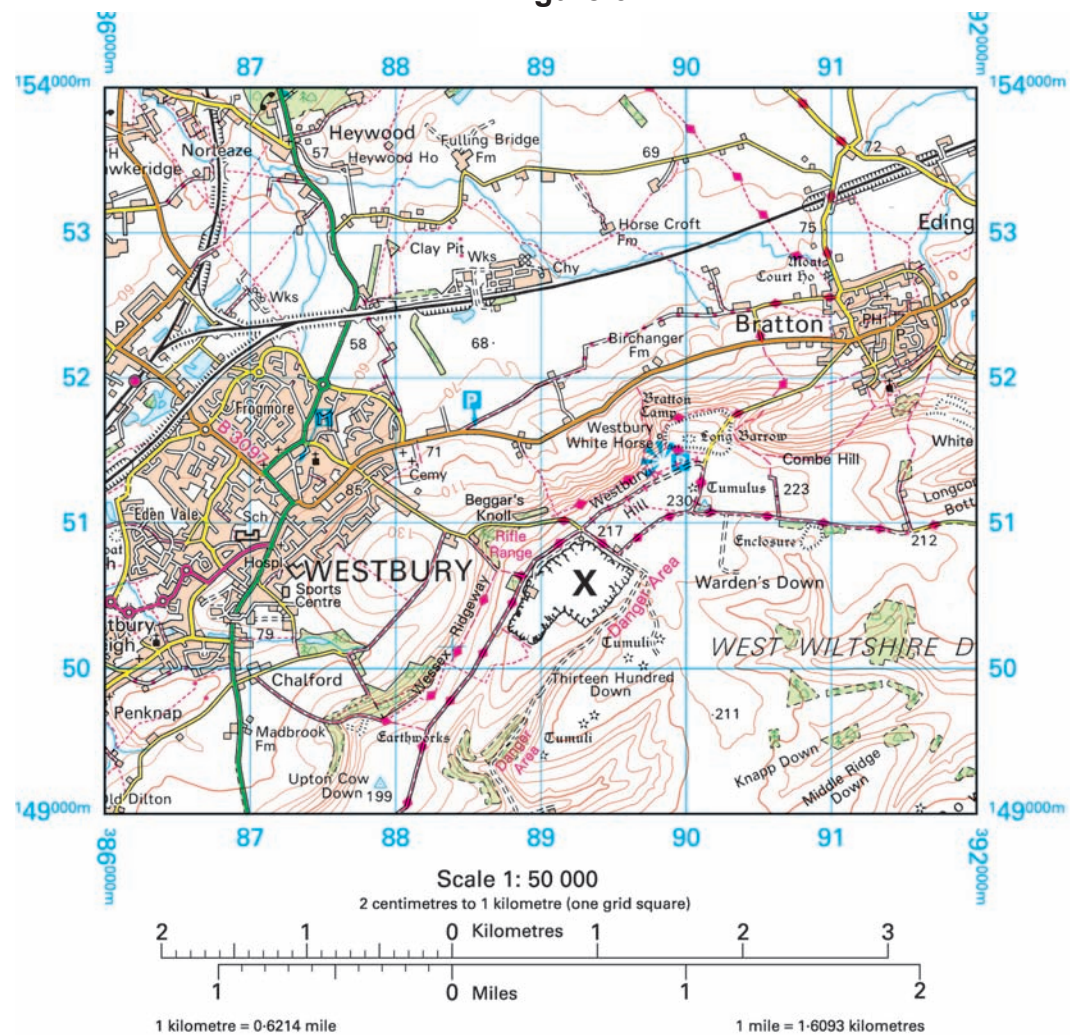


Figure 7

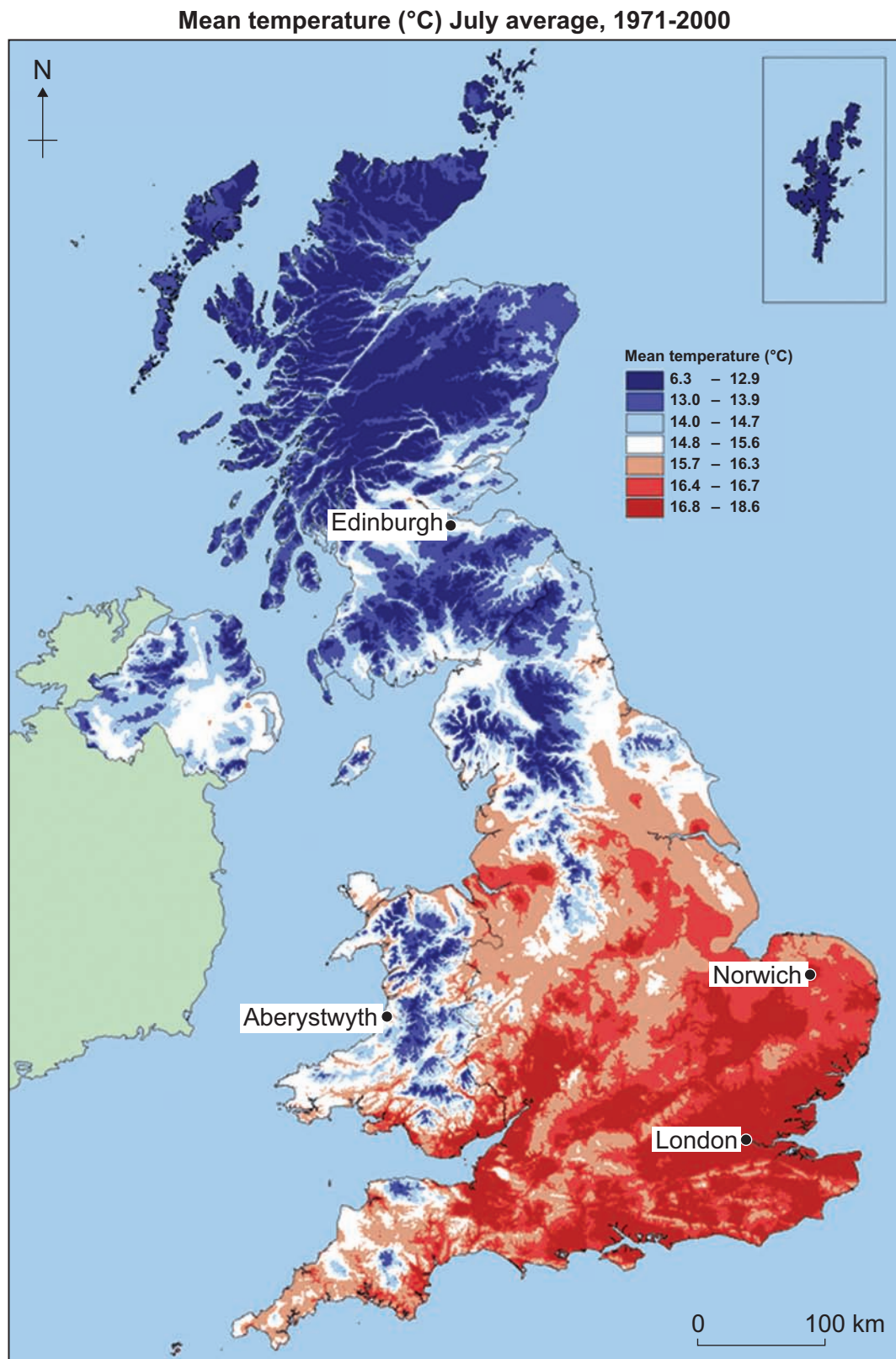


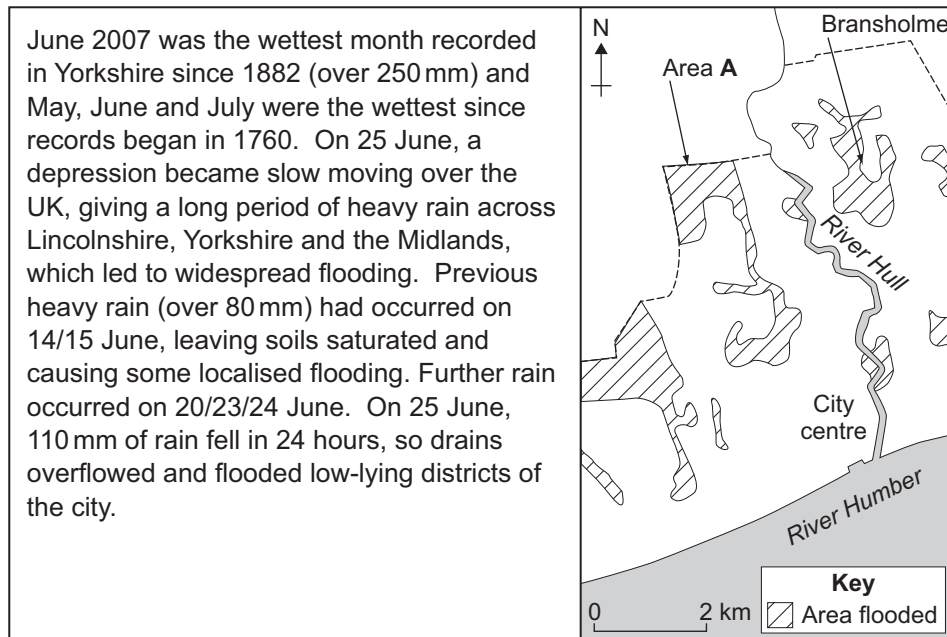
Figure 8

Figure 12



Figure 13a**Figure 13b**

Figure 15

Figure 17

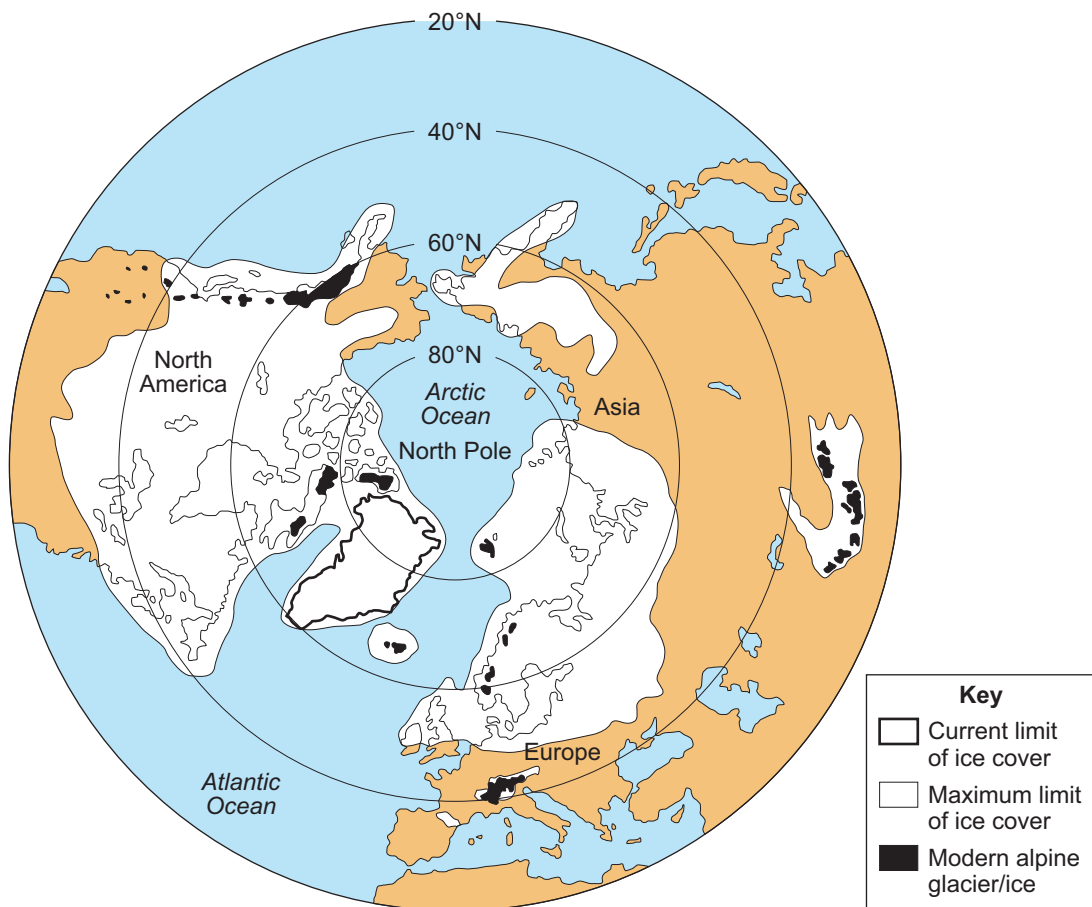


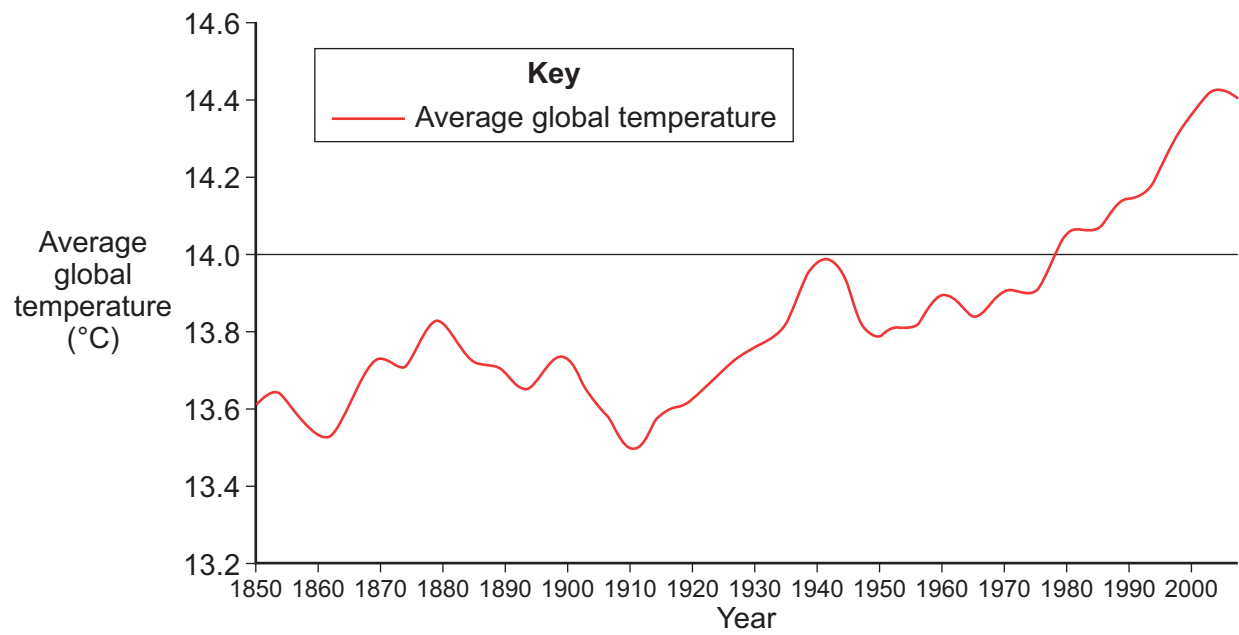
Figure 19

Figure 20

There is no source material printed on this page

ACKNOWLEDGEMENT OF COPYRIGHT-HOLDERS AND PUBLISHERS

Permission to reproduce all copyright material has been applied for. In some cases, efforts to contact copyright-holders have been unsuccessful and AQA will be happy to rectify any omissions of acknowledgements in future papers if notified.

- Figure 2: Figure 6, Figure 9, Figure 12: Reproduced by kind permission of Ordnance Survey on behalf of HMSO. © Crown copyright 2009. All rights reserved. Ordnance Survey Licence number 100041328
- Figure 5: J CANAVAN
- Figure 7: © Crown copyright 2000, the Met Office
- Figure 8: Reproduced with the permission of Nelson Thornes Ltd from Geofile Online, Geofile 27, Issue 1, first published September 2008.
- Figure 13a: www.outdoor-weblog.com/imgname--death_valley_land_of_extremes_part_four
- Figure 13b: www.spleen-me.com/gallery2/v/DeathValley08/Ubehebe/DSC_2030.jpg.html
- Figure 15: J CANAVAN
- Figure 17: DAVID BRIGGS
- Figure 19: Adapted from Crown copyright information supplied by the Met Office
- Figure 20: J CANAVAN

Copyright © 2010 AQA and its licensors. All rights reserved.